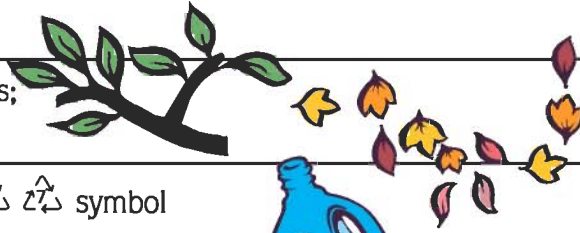


WHAT GOES WHERE?



Flowers; grass clippings; leaves; plant and weed trimmings; and, small branches and prunings



YES NO NO

Any empty plastic container with a ♻️ symbol

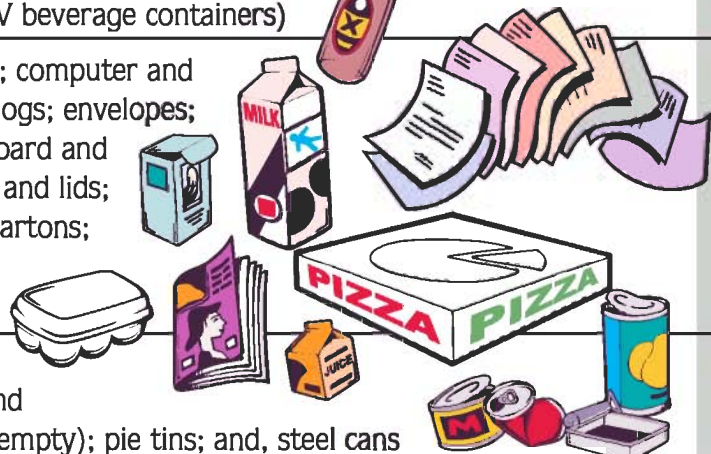
Look for the symbol on the bottom or back of such things as beverage containers (including CRV beverage containers), bleach, condiment, cleaner, cooking oil, detergent, liquor, lotion, mouthwash, shampoo and syrup bottles; milk and water jugs; lids and plastic bottle caps; plastic food trays and packaging; yogurt and butter type containers; and, meat trays



NO YES NO

Glass food and beverage containers (including CRV beverage containers)

Newspapers; magazines; phonebooks; paper bags; computer and copier paper; brochures; junk mail; coupons; catalogs; envelopes; wrapping paper; paper tubes; tissue boxes; cardboard and pizza boxes (flattened); shoeboxes; take-out cups and lids; soda and juice boxes; milk, cream and non-dairy cartons; cereal and cake type boxes (remove food liners, discard in gray cart); and, paper egg cartons



NO YES NO

NO YES NO

Empty soda and beverage cans (including CRV beverage containers); food and soup cans; fruit and vegetable juice cans; pet food cans; aerosol cans (empty); pie tins; and, steel cans



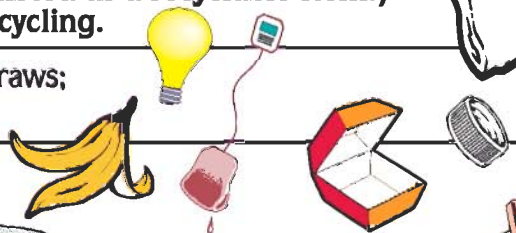
NO YES NO

Window glass; mirrors; ceramics; porcelain; crystal; Pyrex; drinking glasses; light bulbs; and, **Plastic grocery, newspaper and garbage bags (Due to problems with plastic bags clogging the recycling equipment, they are no longer listed as a recyclable item.) Many supermarkets accept plastic grocery bags for recycling.**



NO NO YES

Aluminum foil; bubble wrap; plastic wrap; plastic utensils; straws; packing peanuts; and, potato chip and snack bags



NO NO YES

Food waste; soiled paper plates and fast food wrappers; plastic wrap from meat trays; and, waxed paper



NO NO YES

Animal waste; kitty litter; bathroom tissue; diapers; sanitary products; ear swabs; and, toothpaste tubes



NO NO YES

Video tapes, CDs and CD cases



NO NO YES

Dinnerware; ovenware; and, pots and pans

NO NO YES

Garden hose; rubber bands; paperclips; six-pack rings; wire; and, scrap metal

NO NO YES

Pantyhose, worn shoes, clothes and pillows



NO NO YES

Take the items below to the Yuba-Sutter Household Hazardous Waste Facility located at 134 Burns Drive in Yuba City • Open Saturdays 8 a.m. to 4 p.m. 671-6900 (Saturday) • 743-6933 (Monday - Friday)

NO NO NO

Antifreeze; batteries (all types); brake and transmission fluids; cleaning products (containers that are not empty); drain cleaner; gas; kerosene and other flammables; hair permanent and straightener solutions; herbicides; hobby chemicals; lighter fluid; medicines; motor oil; nail polish remover; oil filters; oven cleaner; paint (oil based and latex); paint thinner; pesticides and poisons; pool cleaners; shoe polish; fluorescent light tubes; thermostats; mercury thermometers; sharps in puncture-resistant containers; and, small propane cylinders (5 gallon).

Curbside Recycling is good for everyone!

Useful Information:

- Curbside Recycling is a community waste reduction program that was implemented in response to the California Integrated Waste Management Act of 1989. All California communities are required to divert 50% of their municipal solid waste from landfills or face stiff fines for non-compliance.
- Make sure your carts are visible to the driver. Your carts should be placed at the curb, at least 3 feet apart, and at least 3 feet from any cars or other objects. This allows the fully automated trucks to pick up the carts. If the driver has to leave the truck to move the carts, the cost of the program increases.
- You only need to put your carts out when they are full. All three carts will be picked up on your regular trash day each week.
- The cost of the recycling program is included in the new garbage collection

program, and the cost is based upon how much garbage (gray cart) that you and your family produce. The less garbage you throw away, the less you will pay, as weekly residential garbage service is available in three cart sizes (32-, 64- or 96-gallons). This is one reason why it's important for you to reduce, reuse and recycle everything possible—from your soda bottles to yard trimmings.

- If you are finding that you regularly need a larger gray garbage cart, you can order a 64- or 96-gallon cart at an additional cost.
- Rinsing out your cans, bottles, and jars is not required. BUT... it does help prevent bad odors and helps keep them from attracting bugs.
- If you occasionally have too much recyclable material, you can place a bag next to your blue cart.

- If you regularly have more recyclable material than your blue cart can hold, please call for a larger blue cart.
- If you have too much green waste in the Spring and Fall, you can bag or bundle the excess and place it by your cart for pickup on your regular trash day.
- You can continue to redeem your cans and bottles for cash at any certified recycling center.
- **Place recyclables loosely in blue recycling cart. (NO PLASTIC BAGS PLEASE!)**

If you have further questions please call us at:

743-6933

or visit www.ysdi.com

This project is partially funded by the Yuba-Sutter Regional Waste Management Authority and the California Department of Conservation. For more information about beverage container recycling, please call 1-800-RECYCLE or visit the Department of Conservation website at www.bottlesandcans.com.

6/03


Printed on recycled paper.

A Convenient Chart To Help You With...

UPDATED!
JUNE 2003

Yuba  Sutter

**CURBSIDE
RECYCLING**

Provided by Yuba-Sutter Disposal, Inc.  People • Service • Environment